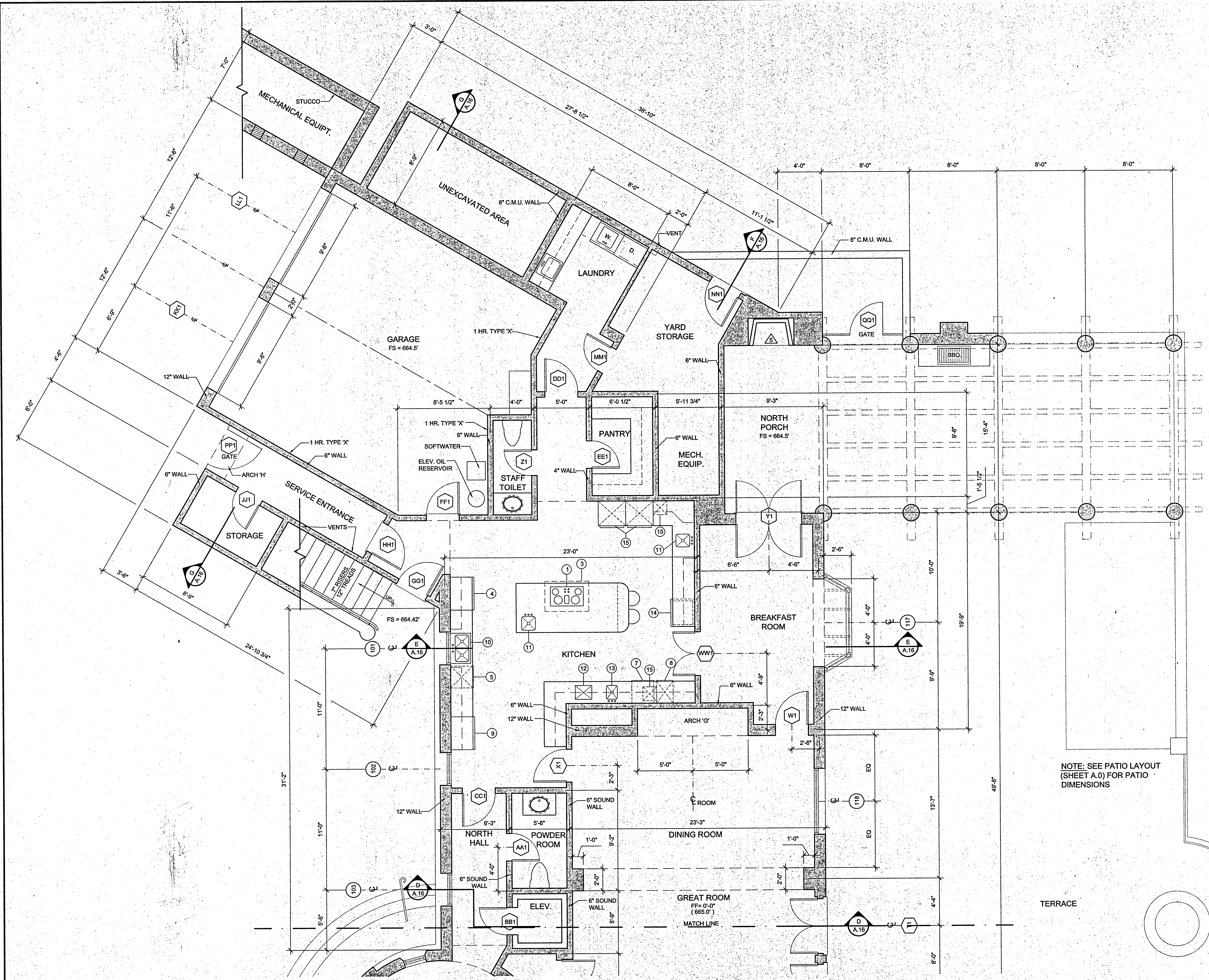


\\weber\big\_shares\Projects\2003\03-0825\_Casa Elar\02-13-04\_Current\Casa Elar\_A.4.dwg Thu Apr 01 16:21:44 2004

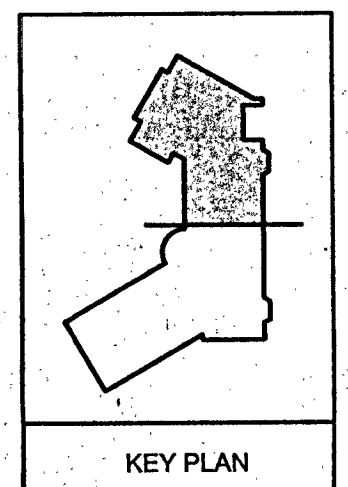


**DIMENSION NOTE:**  
UNLESS OTHERWISE NOTED,  
ALL EXT. DIMS. ARE FROM  
FACE OF SHEATHING (F.O.S.)  
AND ALL INT. DIMS. ARE FROM  
CENTERLINE OF WALL

**PLAN KEY NOTES:**

- 1 COOK TOP - 6 BURNERS & BROILER - JADE
- 2 STEAM COMBO OVEN - GAGGENAU
- 3 ISLAND HOOD & EXHAUST FAN - WINDCREST
- 4 BUILT-IN REFRIGERATOR - NORTHLAND
- 5 DISH MACHINE - BOSCH
- 7 WINE REFRIGERATOR - U-LINE
- 8 ICE MAKER/ REFRIGERATOR COMBO W/ FILTER - U-LINE
- 9 BUILT-IN FREEZER - NORTHLAND
- 10 DISH SINK, FAUCET & DISPOSER - FRANKE
- 11 ISLAND SINK & PREP SINK (W/ FAUCETS) - FRANKE
- 12 EXPRESSO MACHINE - ASTRA
- 13 BAR SINK W/ FILTER & FAUCET - FRANKE
- 14 REFRIGERATOR DRAWERS - U-LINE
- 15 MICROWAVE (DOOR ONLY) - GAGGENAU

NOTE: SEE PATIO LAYOUT  
(SHEET A.0) FOR PATIO  
DIMENSIONS



REVISIONS	BY

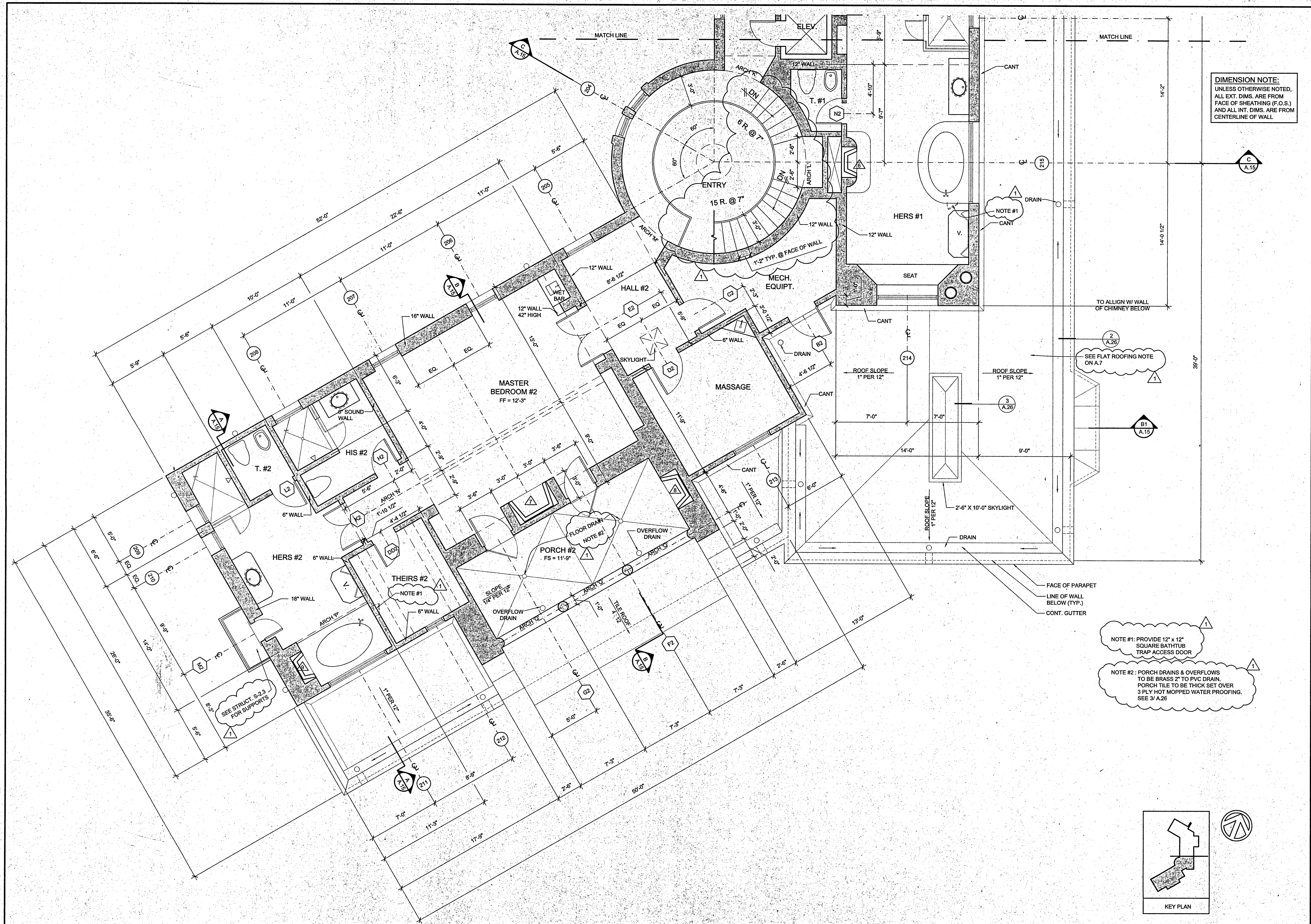
**MAHAN ARCHITECTS**  
P.O. BOX 2459 SANTA BARBARA CA 93120  
FAX 805 962 0851 805 963 4322

**MAIN LEVEL FLOOR PLAN-PARTIAL**  
Casa Elar  
10 Hermosa Road, Ojai, California

DATE	02-13-04
SCALE	1/4" = 1'-0"
DRAWN	BJA
JOB	
SHEET	
<b>A.4</b>	
OF	
SHEETS	



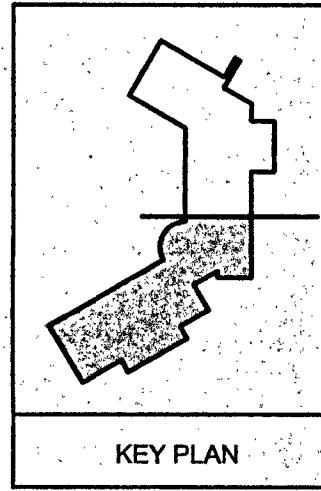
\\mother\019\_share\Projects\2003\03-0825\_Casa Elar\02-13-04\_Current\Casa Elar\_A.5.dwg Thu Apr 01 16:23:17 2004



**DIMENSION NOTE:**  
UNLESS OTHERWISE NOTED,  
ALL EXT. DIMS. ARE FROM  
FACE OF SHEATHING (F.O.S.)  
AND ALL INT. DIMS. ARE FROM  
CENTERLINE OF WALL

NOTE #1: PROVIDE 12" x 12"  
SQUARE BATHTUB  
TRAP ACCESS DOOR

NOTE #2: PORCH DRAINS & OVERFLOWS  
TO BE BRASS 2" TO PVC DRAIN.  
PORCH TILE TO BE THICK SET OVER  
3 PLY HOT MOPPED WATER PROOFING.  
SEE 3/ A.26



REVISIONS	BY
1	ES/10/04 PLAN CHECK

**MAHAN ARCHITECTS**  
P.O. BOX 2459 SANTA BARBARA CA 93120  
FAX 805 962 0851 805 963 4322

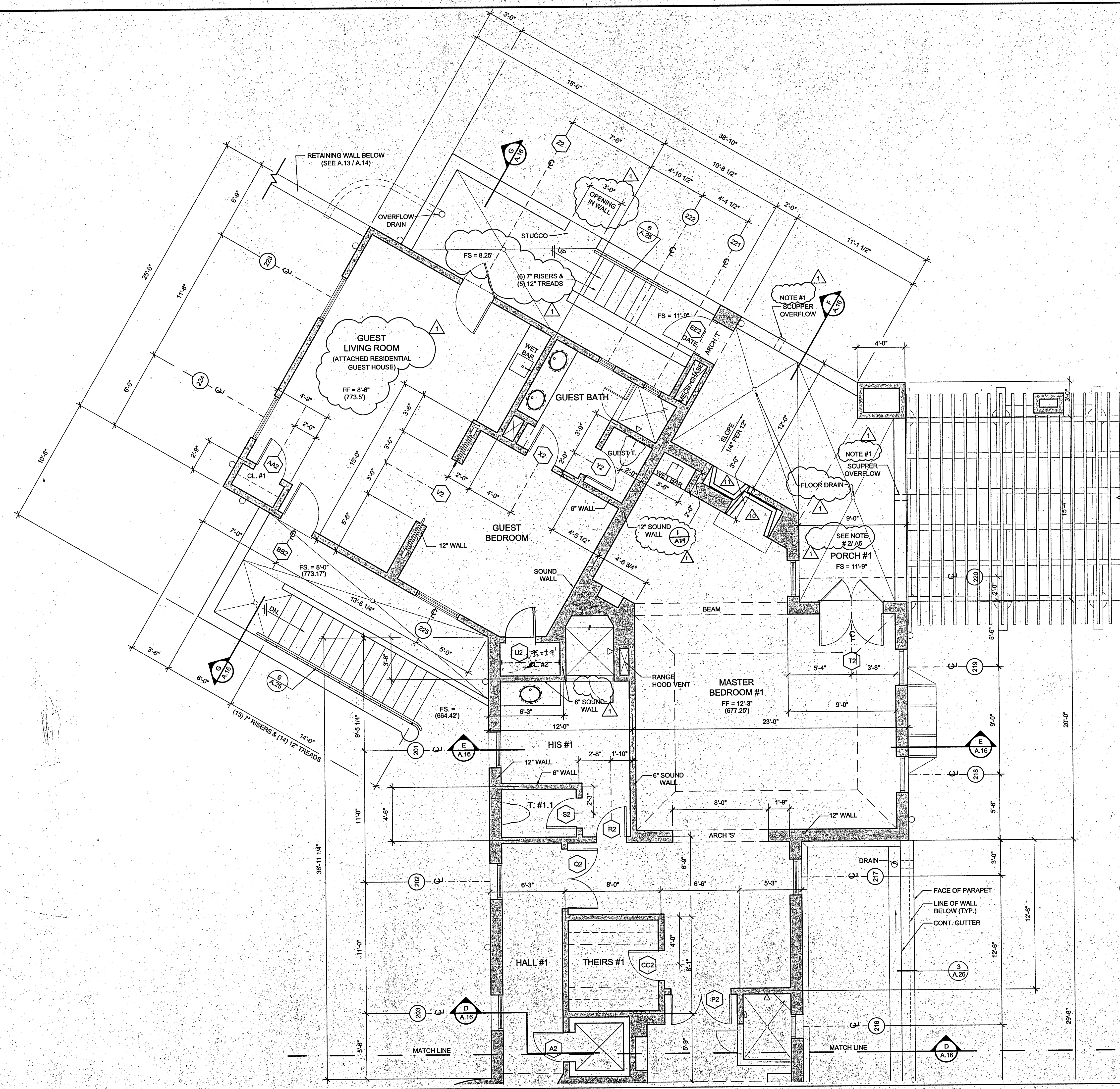
**SECOND LEVEL FLOOR PLAN-PARTIAL**  
Casa Elar  
10 Hermosa Road, Ojai, California

DATE	02-13-04
SCALE	1/4" = 1'-0"
DRAWN	BJA
JOB	
SHEET	
OF	

**A.5**



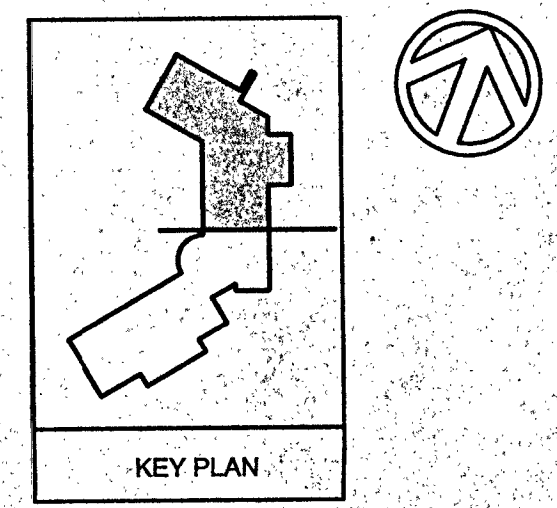
\\Wether\big\_share\Projects\2003\03-0825\_Casa Elar\02-13-04 Current\Casa Elar\_A.6.dwg Thu Apr 01 16:24:55 2004



**DIMENSION NOTE:**  
UNLESS OTHERWISE NOTED,  
ALL EXT. DIMS. ARE FROM  
FACE OF SHEATHING (F.O.S.)  
AND ALL INT. DIMS. ARE FROM  
CENTERLINE OF WALL

NOTE #1:  
SCUPPERS TO BE 3' x FLOOR DRAIN  
& 2" HIGHER

FACE OF PARAPET  
LINE OF WALL BELOW (TYP.)  
CONT. GUTTER



REVISIONS	BY
1	03/18/04 PLAN CHECK

**MAHAN ARCHITECTS**  
P.O. BOX 2459 SANTA BARBARA CA 93120  
FAX 805 962 0851 805 963 4322

**SECOND LEVEL FLOOR PLAN - PARTIAL**  
Casa Elar  
10 Hermosa Road, Ojai, California

DATE: 02-13-04  
SCALE: 1/4" = 1'-0"  
DRAWN: BJA  
JOB:  
SHEET:  
**A.6**  
OF SHEETS